

VPN Instructions for Mathematica Use

Mathematica 8 (campus edition) requires that users to be connected to the network. In the event that you require access to Mathematica for off campus purposes, you will be required to connect to the University's virtual private network (VPN) to get connected.

If you should have any problems with this process, please submit a helpdesk request, and someone will attend to your VPN connection issues.

[Report a Problem](#)

STEP 1: ESTABLISH AN INTERNET CONNECTION

Then.

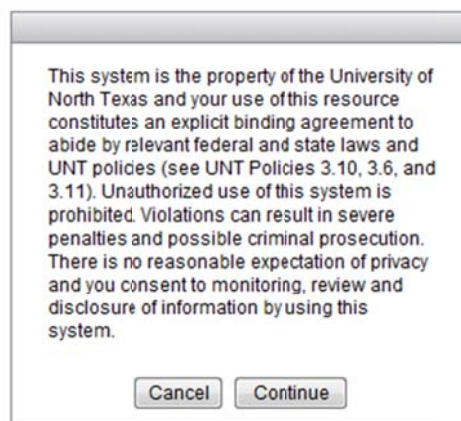
Go to: **vpn.unt.edu**

Enter your **EUID and PASSWORD**



The screenshot shows a web-based login form titled "Login". It contains the following elements:

- A green header bar with the word "Login" in white.
- A prompt: "Please enter your username and password."
- A "GROUP:" label next to a dropdown menu showing "General".
- An "EUID:" label next to a text input field containing "bia0057".
- A "PASSWORD:" label next to an empty text input field.
- A "Login" button at the bottom.



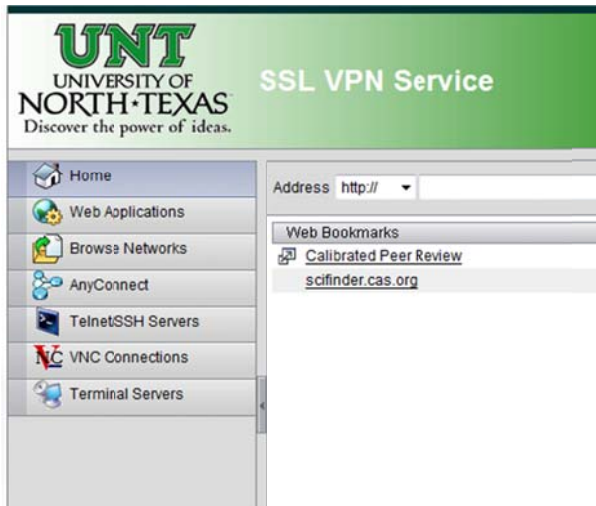
The screenshot shows a dialog box with a grey border and a white background. It contains the following text:

This system is the property of the University of North Texas and your use of this resource constitutes an explicit binding agreement to abide by relevant federal and state laws and UNT policies (see UNT Policies 3.10, 3.6, and 3.11). Unauthorized use of this system is prohibited. Violations can result in severe penalties and possible criminal prosecution. There is no reasonable expectation of privacy and you consent to monitoring, review and disclosure of information by using this system.

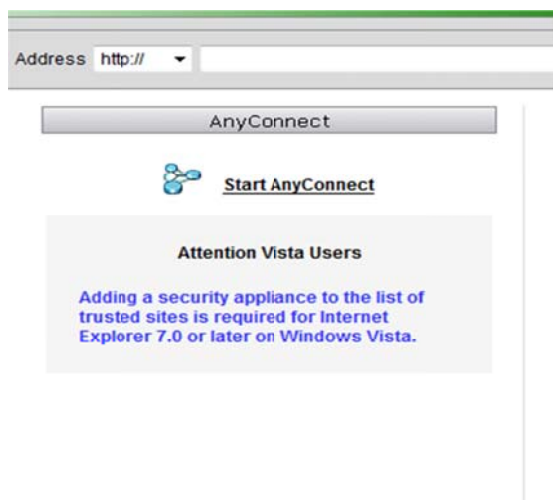
At the bottom of the dialog box are two buttons: "Cancel" and "Continue".

Select **continue**

Go to: **AnyConnect**

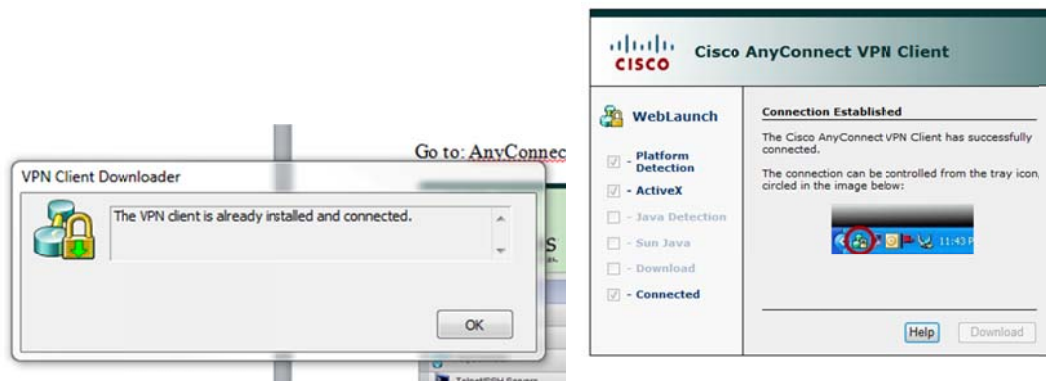


Select: **Start AnyConnect**



This should open a new window, and start the connecting process. You should then see these two

windows.



STEP 2:

Once you are done, go to **START**

All programs

Cisco

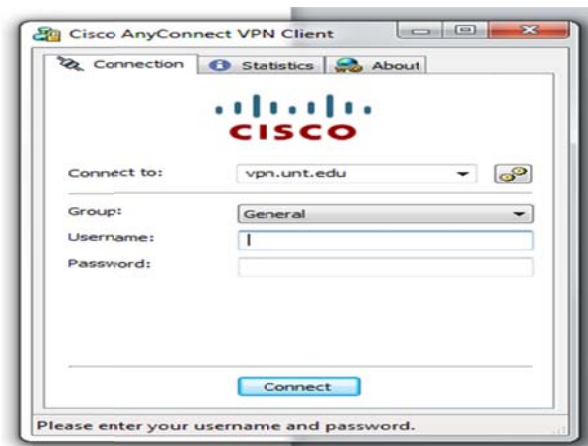
Cisco Anyconnect secure mobility client

When the box appears type: "**vpn.unt.edu**" in the "Connect to:"

Choose "**connect**"

UNDER

ENTER your **EUID** and **PASSWORD**



NEXT

Go to **REMOTE DESKTOP CONNECTION**

ENTER THE IP ADDRESS OF YOUR COMPUTER

Once prompted

Enter your EUID/Password

Enter: **Dallas\EUID** and **Password** (format used for webmail login)

This should allow you similar set as though you were logged into your machine on campus.

Launch Mathematica 8 -you should be able to run the application as though you were on campus.